

# GYG ELEVATOR

GUMYOUNG GENERAL CO., LTD.

GYG  
ELEVATOR

GYG ELEVATOR

GYG  
ELEVATOR

## Design Guide Book

[www.gygelevator.com](http://www.gygelevator.com)



GYG Elevator installation Site ( Domestic )

- ① YongSan QV In Seoul
- ② Guri Art-Hall in Gyeonggido
- ③ Riverside Hotel in Seoul

- CEO's Greetings . . . . . 03
- Brief History . . . . . 05
- Total Solution . . . . . 07
- Service Management . . . . . 09
- Product Information . . . . . 10
- Elevator Design . . . . . 31
- Escalator Design . . . . . 46



# CEO's Greetings

## Growing toward the future every day

**We realize the value of human life, and are always working diligently to create a better future for you—our valued customer.**

In 1996 a collaboration was created between GumYoung General and U.S. based Hollister-Whitney Elevator Corp. This aided in establishing GumYoung General CO., Ltd as a pioneer in improving the elevator industry in the Korean market by introducing new and exciting developments in elevator safety. ( "Rope Gripper™" )

Along with the excellent reputations for quality and experience, the following safety certificates were acquired :  
In 2003 CSA-Canada, 2004 CE-Europe, 2005 TX-China, 2007 EK-Korea and we won the Prize of Excellent Quality Competitiveness Enterprise Award for 9 years in a row from 2006 to 2014.

GumYoung General is making an all-out effort to be known as a leading Korean Representative of high technology and quality elevator equipment. We have been constantly exploring the global market to launch the "GYG ELEVATOR" brand since 2007 to become well recognized worldwide, and it clearly works now by rapidly increased market share and "GYG ELEVATOR" brand is getting reputed more and more.

Meanwhile by our own multilateral efforts, GYG ELEVATOR was granted with Good Design Award product in 2013 and ( "Hi Seoul Brand" ) by Seoul Metropolitan Government. It was the first in Elevator field in Korea and we are very proud of it.

We provide total service of elevator design, manufacture, installation and maintenance for customers' safety and comfortableness by actually practicing constant self-innovation and quality control. It is only possible because we put highest priority on customers' value. Please take a keen interest in GYG Elevator and remember our dedication to our own value.

President & CEO

*Lee, Gum Gee*



## GYG ELEVATOR

**G**old GYG ELEVATOR provides the best product and service.  
GYG ELEVATOR promises a forever unchanging value like Gold to customer.

**Y**oung GYG ELEVATOR is young.  
GYG ELEVATOR is making every endeavor to realize the vision of contributing to  
Human Life by young passion.

**G**lobal GYG ELEVATOR aims at a global company.  
GYG ELEVATOR is expanding every effort to be known as a leading Korean representative  
of high quality elevator.



# Brief History

## Exciting ideas for a brighter tomorrow

- 1996. 2. Established Gumyoung General Co., Ltd.
- 1999. 2. Started the domestic sales of Rope Gripper™
- 2003. 12. Obtained Canada CSA certificate of elevator safety braking device
- 2004. 4. Obtained Europe CE certificate of elevator safety braking device
- 7. Obtained ISO 9001:2000 certificate
- 2005. 4. Applied patent for the hydraulic power generating device for elevator safety braking device
- 5. Obtained China TX certificate (1st in the world)
- 7. Started Beijing liaison office
- 2006. 12. Started elevator business branch in Bangladesh
- 3. Won the prize of Ministry of Commerce, Industry & Energy of the 6th Korea Digital Innovation Management Awards
- 3. Started exporting the full set elevator, Started Shanghai liaison office
- 7. Appointed as the INNO-BIZ small & medium company
- 7. Started Guangzhou liaison office, Started Tokyo liaison office
- 11. Won the prize of Excellent Quality Competitiveness Enterprise by the Ministry of Commerce, Industry & Energy
- 12. Won the prize of Prime Ministry of the 3rd New Business Development Management Award
- 2007. 3. Obtained Korea EK Certificate for elevator safety braking device
- 4. Obtained Japan BEEC safety certificate for elevator safety braking device (1st in the world)
- 11. Won the prize of Excellent Quality Competitiveness Enterprise by the Ministry of Commerce, Industry & Energy for 2 consecutive years
- 11. Started supplying GYG ELEVATOR in a domestic market
- 2008. 10. Won the prize of Excellent Quality Competitiveness Enterprise by the Ministry of Commerce, Industry & Energy for 3 consecutive years
- 11. Won the President prize of the National Quality Management Award
- 12. Won the President prize of the 5th New Development Management Award
- 2009. 4. Obtained the certificate of KOTRA Seal of Excellence
- 2010. 1. Obtained the Patent of Apparatus And Method For Testing Braking Force
- 10. Won the prize of Excellent Quality Competitiveness Enterprise for 5 consecutive years
- 2011. 3. Appointed as a member of advisory committee of property management of Jungnang-gu, Seoul
- 4. Appointed as a member of advisory committee of KOTRA service
- 5. Elevator manufacturing system completed
- 11. Appointed to the 'Excellent Quality Competitiveness Enterprise' 6 years in a row
- 12. Received the award of President at '48th Trade day'
- 2012. 9. Appointed as a good design product ( INVITO-11 )
- 11. Won the prize of Excellent Quality Competitiveness Enterprise by the Ministry of Commerce Industry & Energy for 7 consecutive years
- 2013. 3. Appointed as a Hidden Global Champion ( Company )
- 12. Won the prize of Excellent Quality Competitiveness Enterprise Award for 8 years in a row
- 2014. 1. Launch a service center for a western region in Korea
- 2. Hi-Seoul brand selected
- 5. Launch a service center for a southern region in Korea
- 6. Best Job Creator by the Government of Gyeonggi-do Province
- 11. Industrial Medal Awarded in the National Quality Contest
- 11. Won the prize of Excellent Quality Competitiveness Enterprise Award for 9 years in a row



GYG Elevator installation site ( Domestic )

- 1) HanGang Floating Island
- 2) LSIN Walkerhill Daewoo Prugio Apartment
- 3) GunPo (Bugok) Integrated Freight Terminal
- 4) LS Mtron factory office



**Total Solution**  
*Expanding today's idea into  
tomorrow's reality*

**GYG**  
ELEVATOR

## | If you build a NEW building ?

GYG ELEVATOR supplies a NEW elevator with better technology, stable quality, and differentiated design.

## | If you worry about an OLD elevator ?

The solution is in the Modernization of GYG ELEVATOR.

### Customer's satisfaction will be maximized by our differentiated technology and quality.

**Economic Installation Space** : In the machine roomless elevator, the installation can be easily done by the maximized space efficiency in the architecture design and the smaller & lighter traction machine.

**Easy Maintenance** : Maintenance can be done easily and conveniently through a consolidated control board.

**Low Noise, Low Vibration** : The best comfortableness is secured by low noise and low vibration through the VVVF inverter control with an optimum control by series of voltage and frequency variation, the components under the strict quality control and the precise construction.

**Energy-Saving Inverter** : Energy-saving by the advanced inverter technology which adjusts the motor output properly to the car-side load condition and has the power regenerating function. Human Engineering Design and Environment-Friendly Materials.

**Customer-Oriented Design** : Various solutions suitable for building's overall characteristics, reflecting customer's requests and requirements correctly.

### Modernization

**Energy-Saving** : Max 50% energy saving by changing the overage equipments.

**Minimized Change Cost** : Customer's expense is minimized by the optimal solution after examining the overage elevators precisely.

**Minimized Customer's Inconvenience** : Customer's inconvenience is minimized by the shortest time to the construction schedule based on the accumulated know-how.

# Service Management

24 hours, 365 days, always  
with customers

Service  
Management



GYG Elevator installation site (overseas)

1) Blackstone project / Jordan

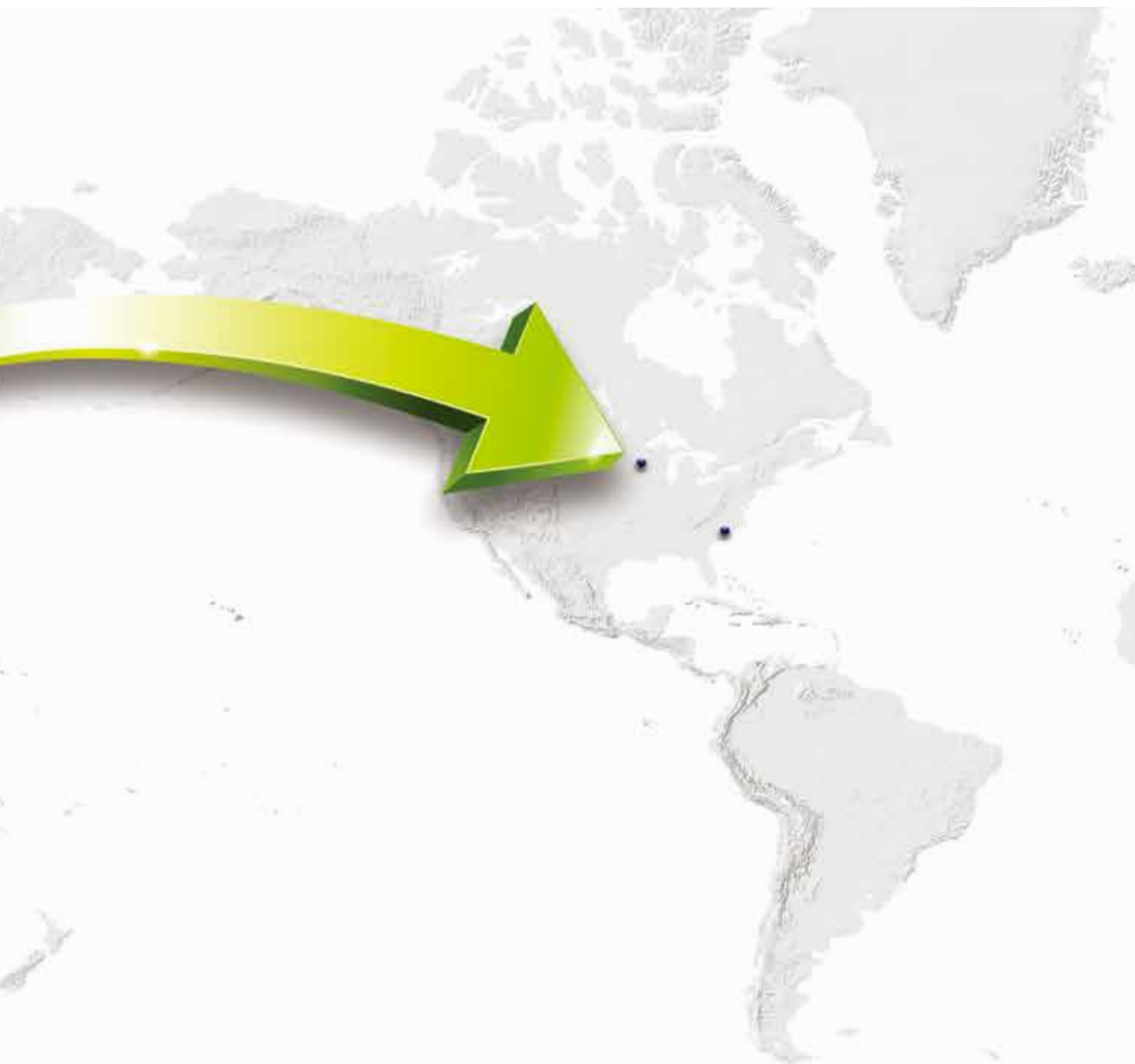
2) IKIA Hotel / Iran

3) Lake City Concord / Bangladesh

## Global Network

U.S.A., Japan, China, Hong kong, Taiwan, Singapore, Vietnam, Thailand, Malaysia, Bangladesh, Iran, Iraq, Jordan, Myanmar, UAE, Saudi Arabia, Pakistan, Kuwait, Syria, Azerbaijan, Indonesia, Philippines, The Dominican Republic, Egypt, Afghanistan, Mexico, Oman





## Service Network

### Remote Surveillance System:

Prejudgment and corrective action for the abnormal symptoms through data collection of elevator running conditions and functions by internet or phone line.

### 24 hours, 365 days Service :

Experienced field engineers are always ready for customers' requirement.

### Digital Emergency Communication :

Elevator passengers can be relieved through communication with service center personnel.

### E-Service System :

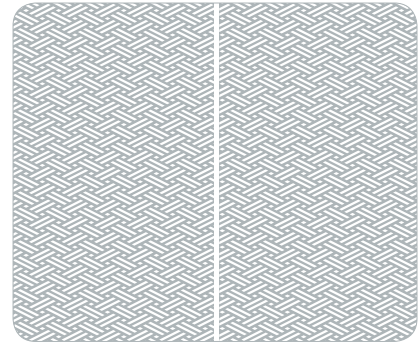
Customers find out the elevator conditions and the service record by connecting e-service system.

### Immediate Countermeasure for Malfunction or Accident :

Engineers in the nearest distance arrive on the scene and render the elevator in the normal condition.



※ 2012 Good Design Award  
Appointed as a Good Design Elevator product in 2012



Etching Pattern

# INVITO-11 (Luxury)

## Cage Design

Ceiling	GCT-D03
C.O.P	GPB-M31
Door	3S Vibration Etching
Wall	3S Vibration Etching + Light
Hand Rail	GHR
Floor	Decotile

- The printed color could be different from the actual object.
- Partition of ceiling and wall is subject to change according to car capacity.





Etching Pattern

# INVITO-14

## Cage Design

Ceiling	GCT-08R1
C.O.P	GPB-M33
Door	STS Mirror Etching
Wall	STS Mirror Etching
Hand Rail	GHR-04
Floor	Miraton

- The printed color could be different from the actual object.
- Partition of ceiling and wall is subject to change according to car capacity.







Etching Pattern

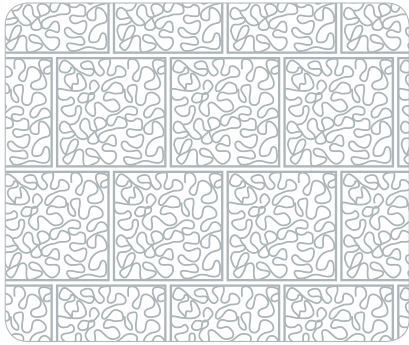
# INVITO-15

## Cage Design

Ceiling	GCT-03
C.O.P	GPB-M32
Door	STS Hairline Etching
Wall	STS Hairline Etching
Hand Rail	GHR-04
Floor	Marble

- The printed color could be different from the actual object.
- Partition of ceiling and wall is subject to change according to car capacity.





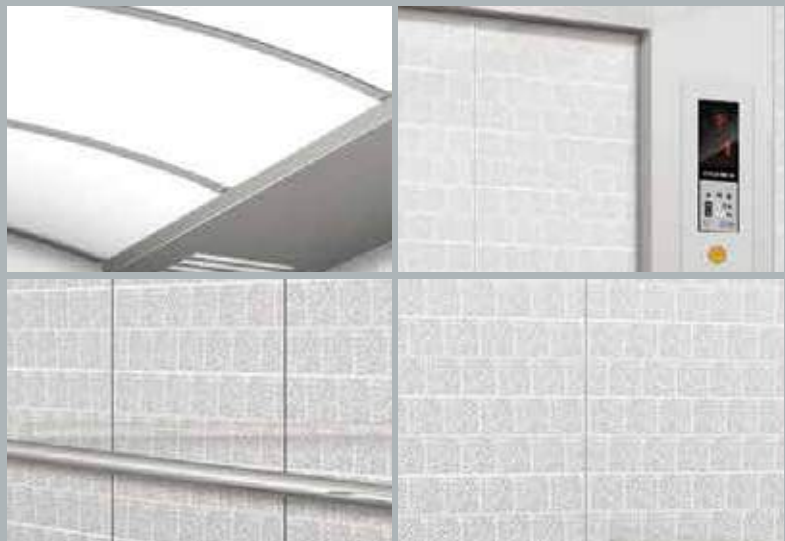
Etching Pattern

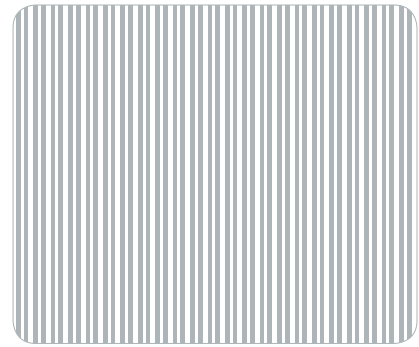
# INVITO-16

## Cage Design

Ceiling	GCT-04
C.O.P	GPB-M32
Door	STS Hairline Etching
Wall	STS Hairline Etching
Hand Rail	GHR-04
Floor	Decotile

- The printed color could be different from the actual object.
- Partition of ceiling and wall is subject to change according to car capacity.





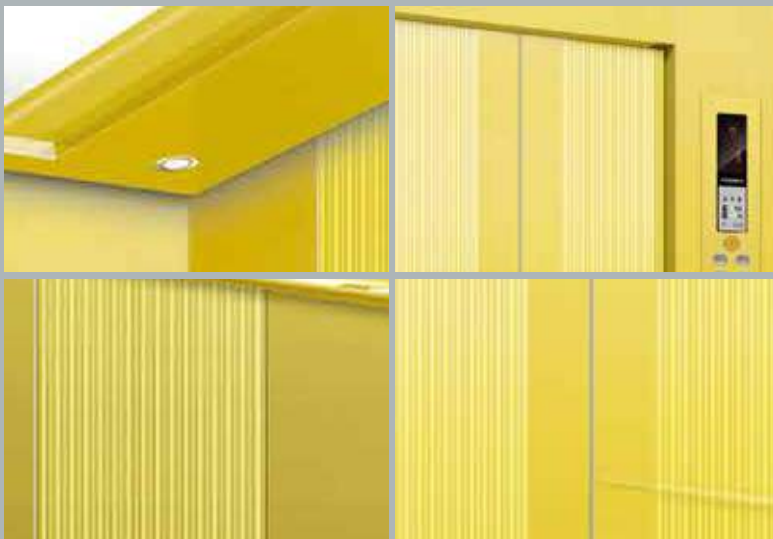
Etching Pattern

# INVITO-17

## Cage Design

Ceiling	GCT-01
C.O.P	GPB-M30
Door	Titanium Gold Mirror Etching
Wall	Titanium Gold Mirror Etching
Hand Rail	GHR-04
Floor	Marble

- The printed color could be different from the actual object.
- Partition of ceiling and wall is subject to change according to car capacity.







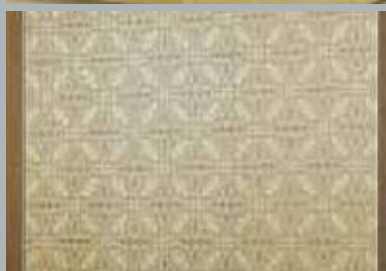
Etching Pattern

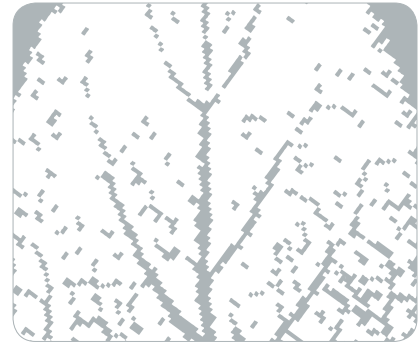
# INVITO-18

## Cage Design

Ceiling	GCT-06
C.O.P	GPB-M32
Door	High Glossy
Wall	High Glossy
Hand Rail	GHR-04
Floor	Decotile

- The printed color could be different from the actual object.
- Partition of ceiling and wall is subject to change according to car capacity.





Etching Pattern

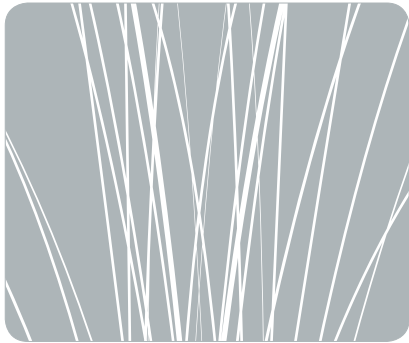
# INVITO-19-R2 (Luxury)

## Cage Design

Ceiling	GCT-NL02
C.O.P	GPB-M34
Door	STS Hairline Etching STS Hairline Ti-Champagne (Front & Rear)
Wall	STS Mirror + STS Mirror Trim (Side) STS Mirror INCO Black Color (Side & Rear)
Hand Rail	GHR-04
Floor	Miraton

- The printed color could be different from the actual object.
- Partition of ceiling and wall is subject to change according to car capacity.





Etching Pattern

## INVITO-20 (Luxury)

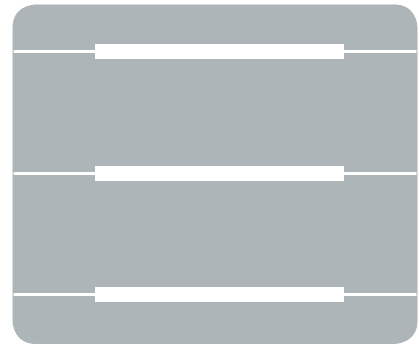
### Cage Design

Ceiling	GCT-D05
C.O.P	GPB-M34
Door	STS Mirror INCO Black Color STS Mirror Ti-Bronze
Wall	High Glossy Graphic STS Mirror Etching INCO Black Color STS MR Trim
Hand Rail	GHR-05
Floor	Miraton

- The printed color could be different from the actual object.
- Partition of ceiling and wall is subject to change according to car capacity.







Etching Pattern

# INVITO-21

## Cage Design

Ceiling	GCT-04
C.O.P	GPB-M32
Door	STS Hairline Etching
Wall	STS Hairline Etching
Hand Rail	GHR-04
Floor	Decotile

- The printed color could be different from the actual object.
- Partition of ceiling and wall is subject to change according to car capacity.





Etching Pattern

# INVITO-22

## Cage Design

Ceiling	GCT-06
C.O.P	GPB-M32
Door	STS Hairline Etching
Wall	STS Hairline Etching
Hand Rail	GHR-04
Floor	Decotile

- The printed color could be different from the actual object.
- Partition of ceiling and wall is subject to change according to car capacity.





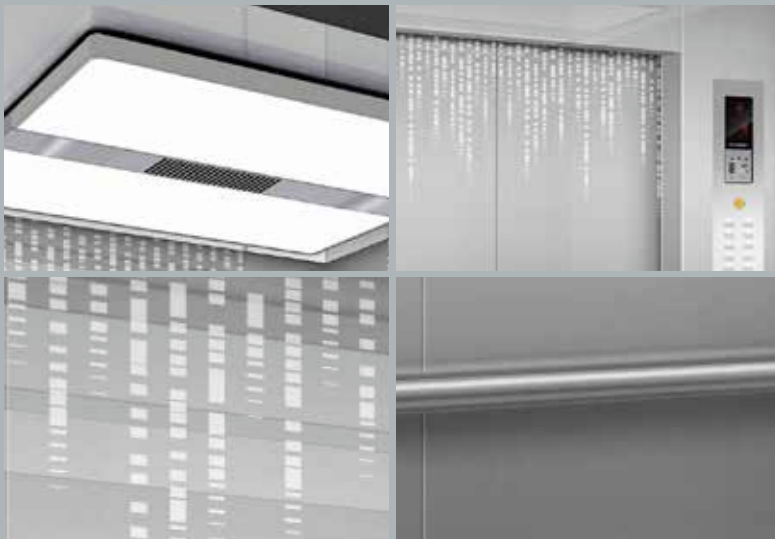
Etching Pattern

# INVITO-25-R2

## Cage Design

Ceiling	GCT-NL02
C.O.P	GPB-M34
Door	STS Hairline Etching
Wall	STS Hairline Etching
Hand Rail	GHR
Floor	Decotile

- The printed color could be different from the actual object.
- Partition of ceiling and wall is subject to change according to car capacity. (Ver, 2014-06)







Etching Pattern

# INVITO-26

## Cage Design

Ceiling	GCT-D02R1
C.O.P	GPB-M34
Door	STS Hairline Etching
Wall	STS Hairline Etching
Hand Rail	GHR-04
Floor	Decotile

- The printed color could be different from the actual object.
- Partition of ceiling and wall is subject to change according to car capacity.





Graphic Pattern

# INVITO-27

## Cage Design

Ceiling	GCT-D02R1
C.O.P	GPB-M32
Door	High Glossy Graphic
Wall	High Glossy Graphic
Hand Rail	GHR-04
Floor	Decotile

- The printed color could be different from the actual object.
- Partition of ceiling and wall is subject to change according to car capacity.







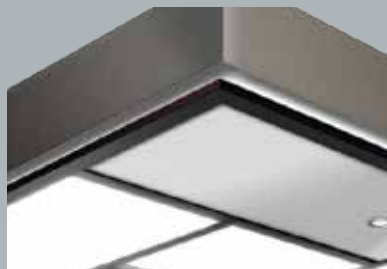
Graphic Pattern

# INVITO-28

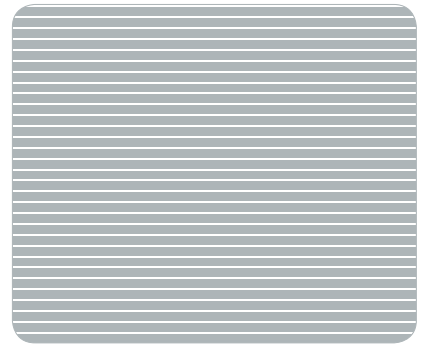
## Cage Design

Ceiling	GCT-D02R1
C.O.P	GPB-M30
Door	High Glossy Graphic
Wall	High Glossy Graphic
Hand Rail	GHR-04
Floor	Decotile

- The printed color could be different from the actual object.
- Partition of ceiling and wall is subject to change according to car capacity.







Etching Pattern



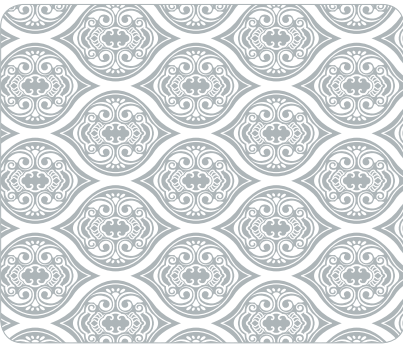
# Hospital Lift

## Cage Design

Ceiling	GCT – 12
C.O.P	GPB – M34
Door	STS Mirror Etching
Wall	STS Mirror Etching
Hand Rail	GHR – 04
Floor	Decotile

- The printed color could be different from the actual object.
- Partition of ceiling and wall is subject to change according to car capacity.





Etching Pattern

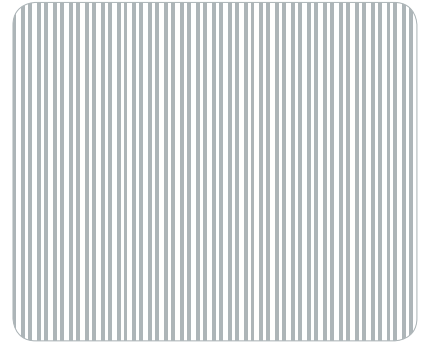


# Hospital Lift

## Cage Design

Ceiling	GCT – 04
C.O.P	GPB – M34
Door	STS Hairline Etching
Wall	STS Hairline Etching
Hand Rail	GHR – 03
Floor	Decotile

- The printed color could be different from the actual object,
- Partition of ceiling and wall is subject to change according to car capacity,



Etching Pattern



# Observation Lift

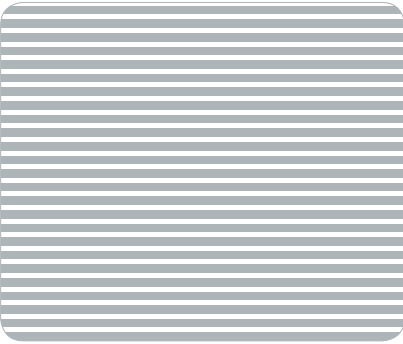
## Cage Design

Ceiling	GCT
C.O.P	GPB – M30
Door	STS Mirror Etching
Wall	STS Mirror Etching
Hand Rail	GHR – 04
Floor	Miraton

- The printed color could be different from the actual object.
- Partition of ceiling and wall is subject to change according to car capacity.







Etching Pattern



# Observation Lift

## Cage Design

Ceiling	GCT
C.O.P	GPB – M31
Door	STS Mirror Etching
Wall	STS Mirror Etching
Hand Rail	GHR – 03
Floor	Miraton

- The printed color could be different from the actual object.
- Partition of ceiling and wall is subject to change according to car capacity.



# Observation Lift

## Cage Design

Ceiling	GCT – 06
C.O.P	GPB – M31
Door	3S Vibration + Glass
Wall	3S Vibration + Glass
Hand Rail	GHR – 04
Floor	Marble

- The printed color could be different from the actual object.
- Partition of ceiling and wall is subject to change according to car capacity.





## Freight Lift

### Cage Design

Ceiling	GCT
C.O.P	GPB – M34
Door	STS Hairline Etching
Wall	STS Hairline Etching
Floor	Checkplate

- The printed color could be different from the actual object,
- Partition of ceiling and wall is subject to change according to car capacity,

## Car Lift

### Cage Design

Ceiling	GCT
C.O.P	GPB – M34
Wall	STS Hairline
Floor	Checkplate

- The printed color could be different from the actual object,
- Partition of Ceiling and Wall is subject to change according to car capacity,







HALL DESIGN

DOOR	Titanium Gold Mirror Etching
JAMB	Titanium Gold Mirror
BUTTON	GHN – F03
H.P.I.	GHP – 04



HALL DESIGN

DOOR	STS Mirror Etching
JAMB	STS Mirror
BUTTON	GHN – F02
H.P.I.	GHP – 01



HALL DESIGN

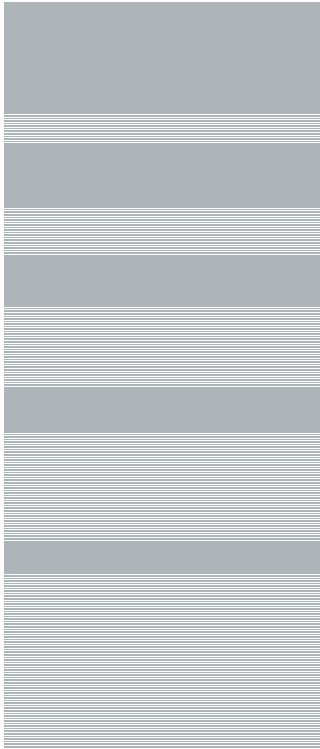
DOOR	STS Hairline Etching
JAMB	STS Hairline
BUTTON	GHI – S03



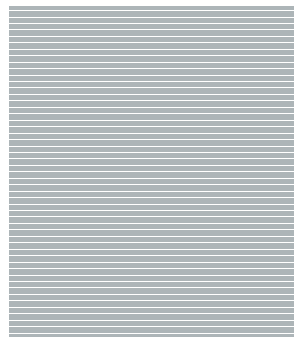
HALL DESIGN

DOOR	Color Painting
JAMB	Color Painting
BUTTON	GHI – S02

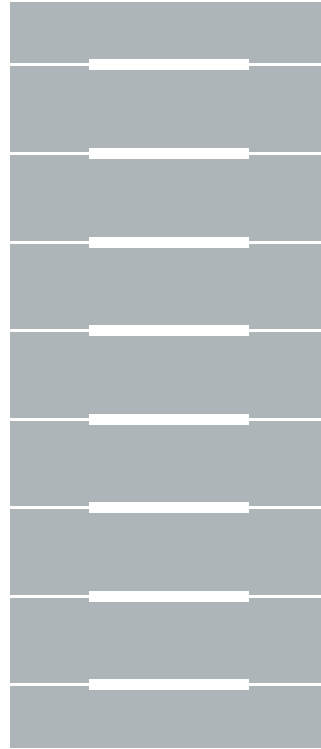
## ETCHING PATTERN



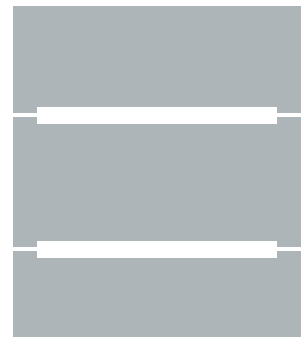
GEP - 01



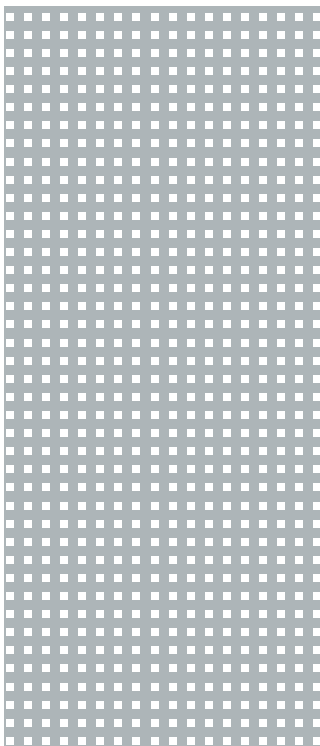
GEP - 01 Detail



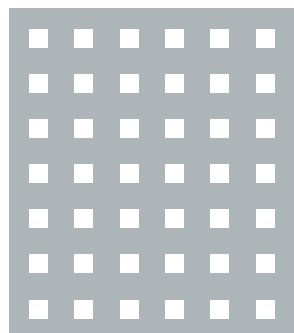
GEP - 02



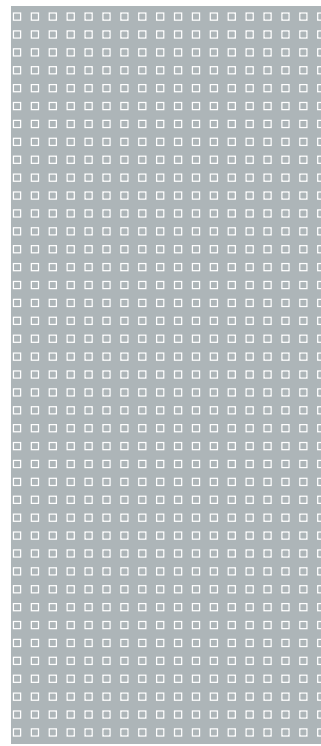
GEP - 02 Detail



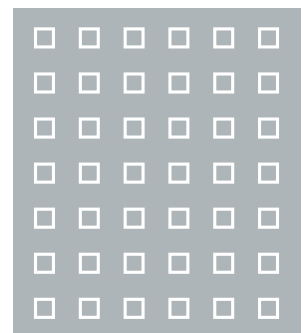
GEP - 03



GEP - 03 Detail



GEP - 04



GEP - 04 Detail

# Elevator Design

## ETCHING PATTERN



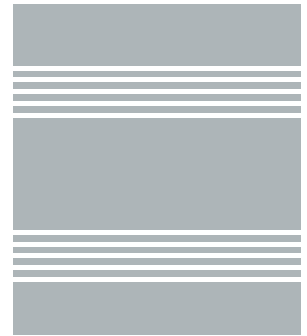
GEP - 05



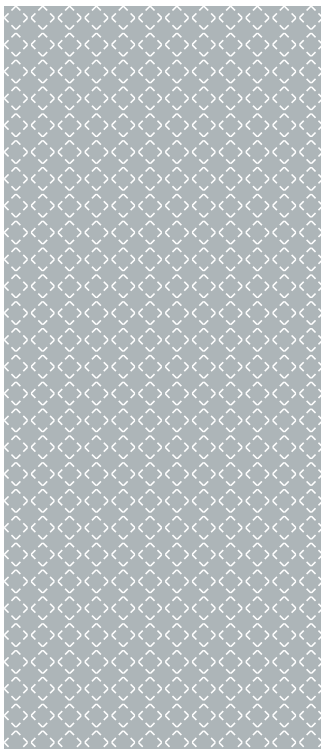
GEP - 05 Detail



GEP - 06



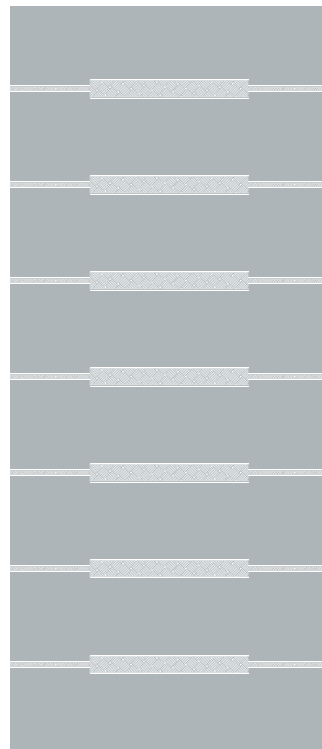
GEP - 06 Detail



GEP - 07



GEP - 07 Detail



GEP - 08



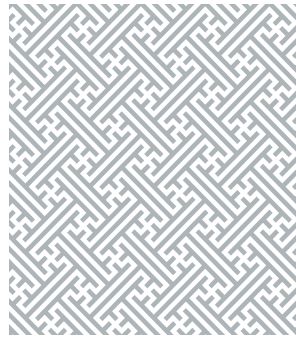
GEP - 08 Detail

Elevator Design

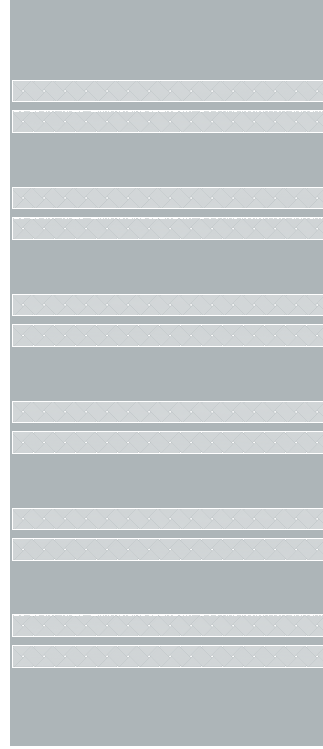




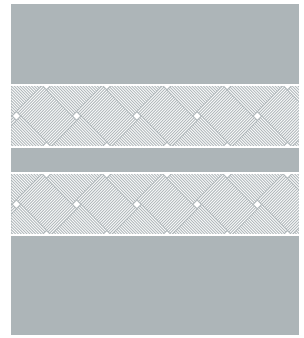
GEP - 09



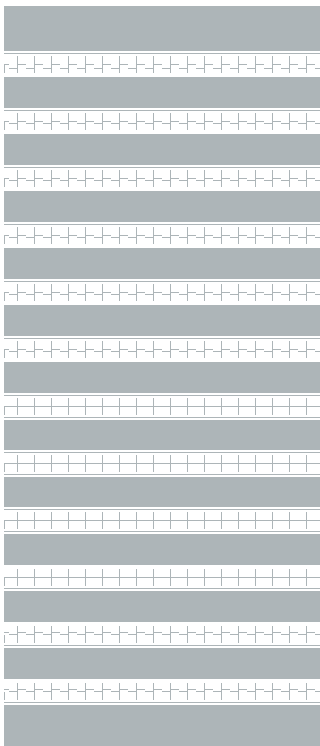
GEP - 09 Detail



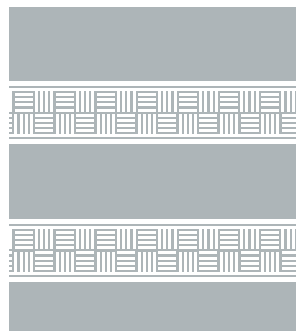
GEP - 10



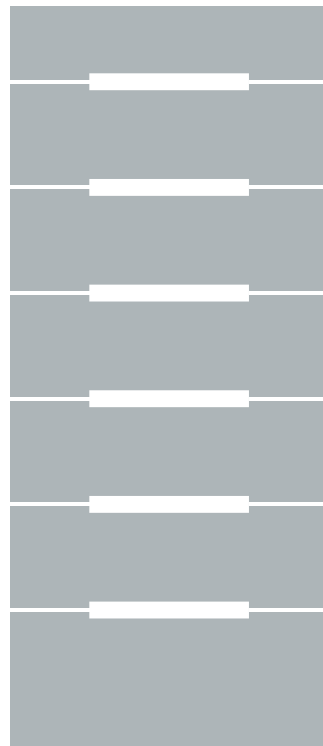
GEP - 10 Detail



GEP - 11



GEP - 11 Detail



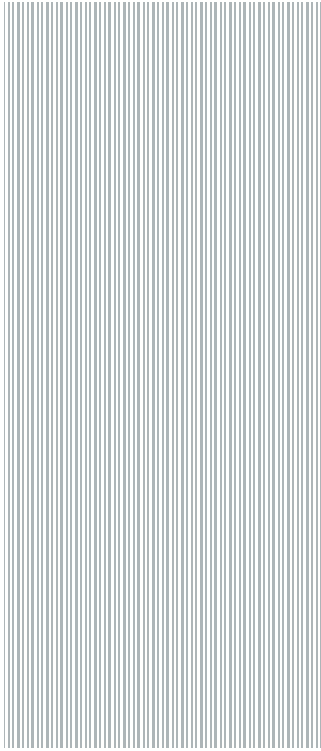
GEP - 12



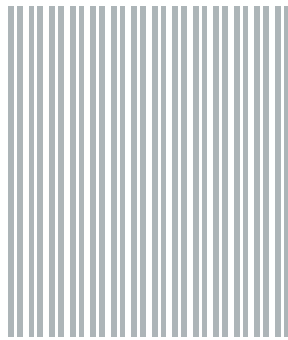
GEP - 12 Detail

# Elevator Design

## ETCHING PATTERN



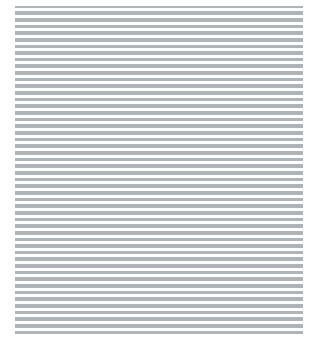
GEP - 13



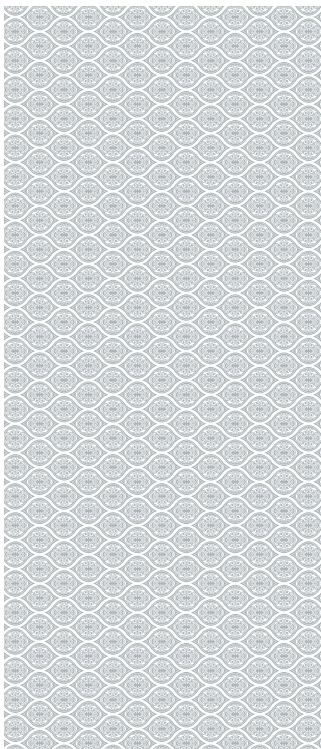
GEP - 13 Detail



GEP - 14



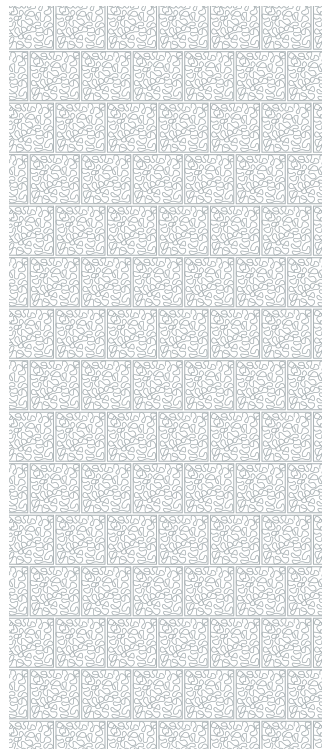
GEP - 14 Detail



GEP - 15



GEP - 15 Detail

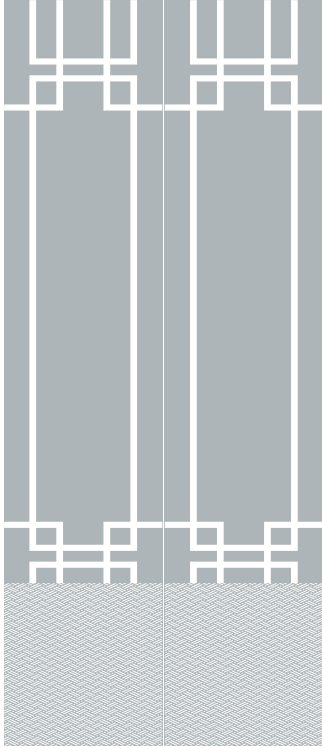


GEP - 16

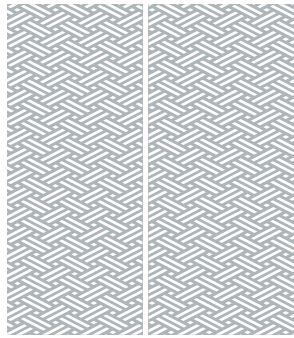


GEP - 16 Detail

## ETCHING PATTERN



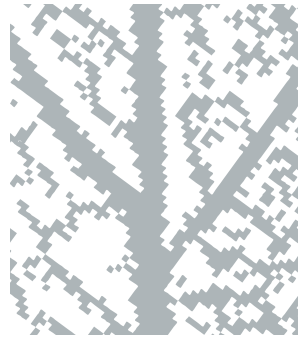
GEP - 17



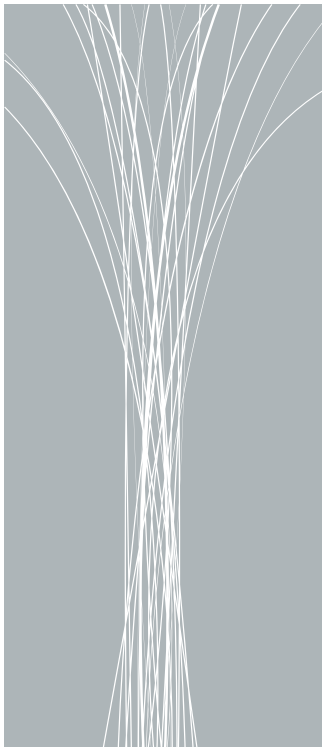
GEP - 17 Detail



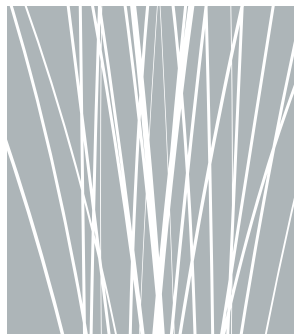
GEP - 18



GEP - 18 Detail



GEP - 19



GEP - 20 Detail



GEP - 20



GEP - 20 Detail



# Elevator Design

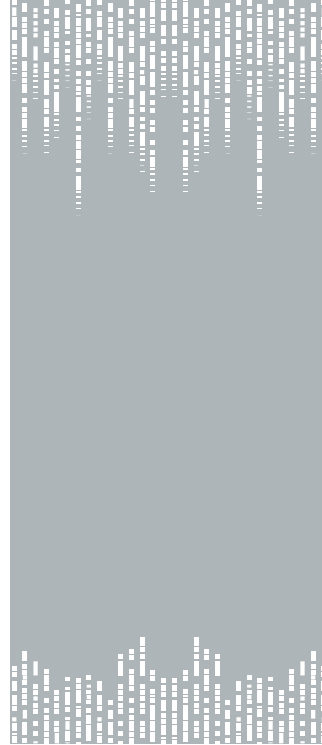
## ETCHING PATTERN



GEP – 21



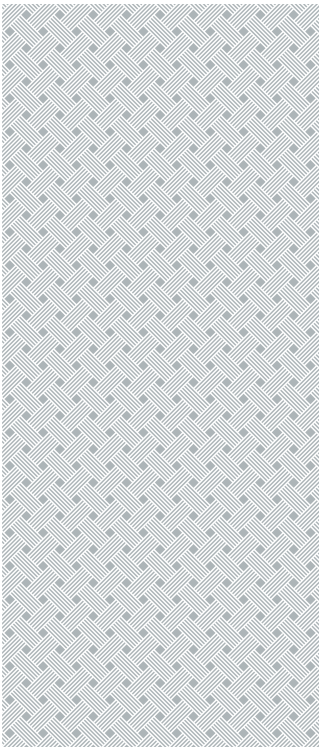
GEP – 21 Detail



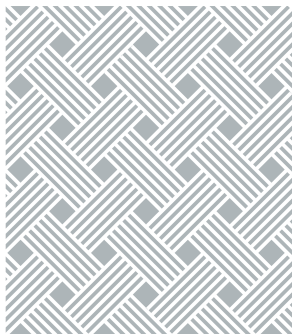
GEP – 22



GEP – 22 Detail



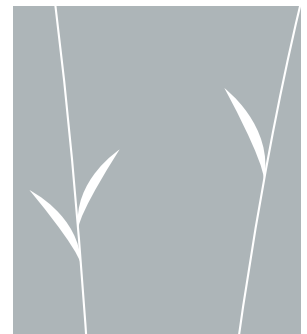
GEP – 23



GEP – 23 Detail

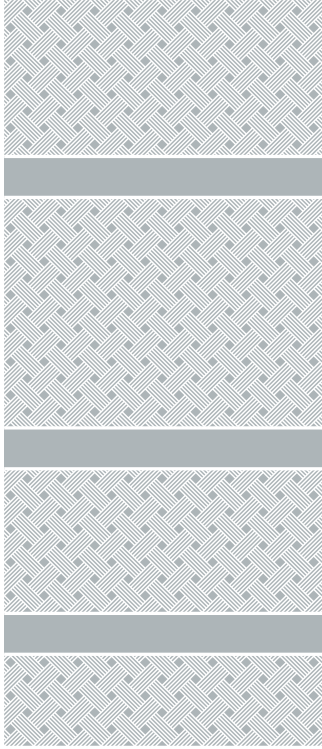


GEP – 24



GEP – 24 Detail

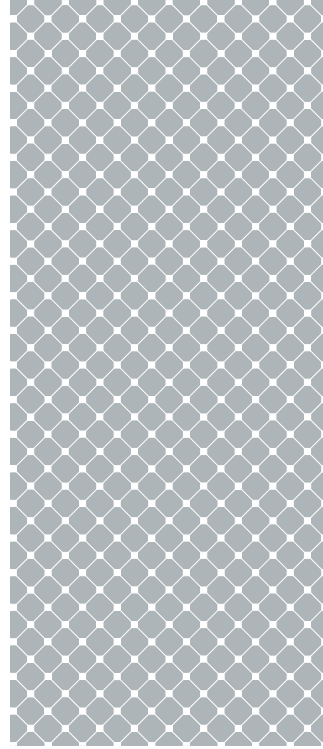
## ETCHING PATTERN



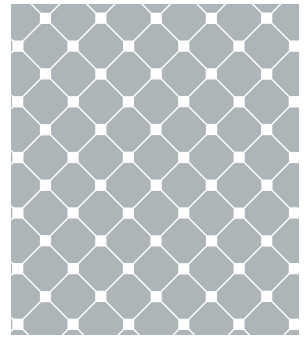
GEP – 25



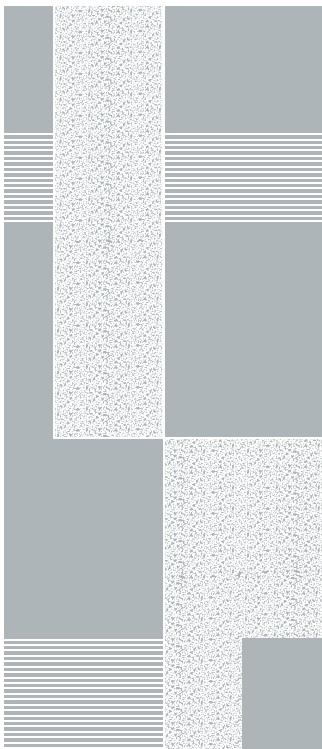
GEP – 25 Detail



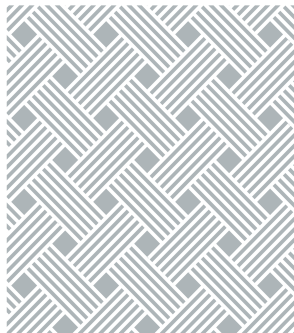
GEP – 26



GEP – 26 Detail



GEP – 29



GEP – 29 Detail



GEP – 30



GEP – 30 Detail

# Hall & Cabin Design

## CAR CEILING

Luxury Type



GCT - D02R1



GCT - D03



GCT - D05



GCT - NL02

### General Type



GCT - 01



GCT - 02



GCT - 03



GCT - 04



GCT - 05



GCT - 06



GCT - 08R1



GCT - 10



GCT - 12



# Hall & Cabin Design

## CAR OPERATING PANEL



GPB - M13



GPB - M14



GPB - M15



GPB - M16



GPB - M17



GPB - M18



GPB - M19



GPB - M20



GPB - M21

# Hall & Cabin Design

## NAME PLATE



Color : Natural White



Color : Orange Red



Color : Sky Blue

## CAR OPERATING PANEL



GPB - M30



GPB - M31



GPB - M32



GPB - M33



GPB - M34

# Hall & Cabin Design

## CAR OPERATING PANEL



GPB - H01



GPB - H02



GPB - H03



GPB - H04



GPB - H05

## BUTTON

### General Type



GBU - 01



GBU - 02



GBU - 03



GBU - 04

### Luxury Type

Standby



Calling(Red)



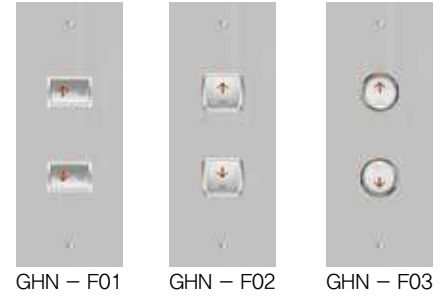
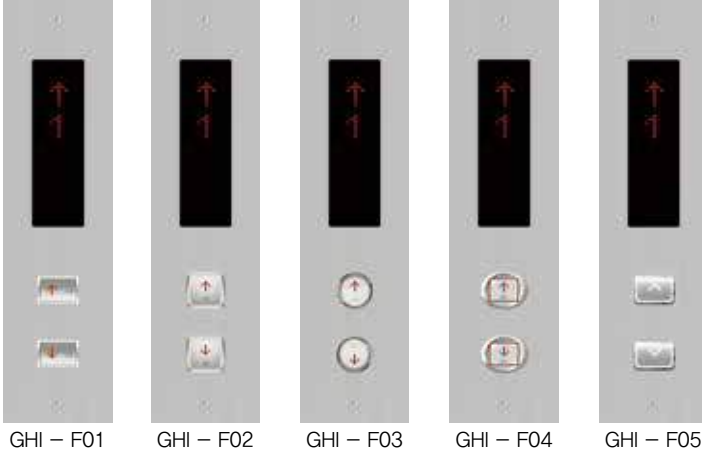
GBU - 10R



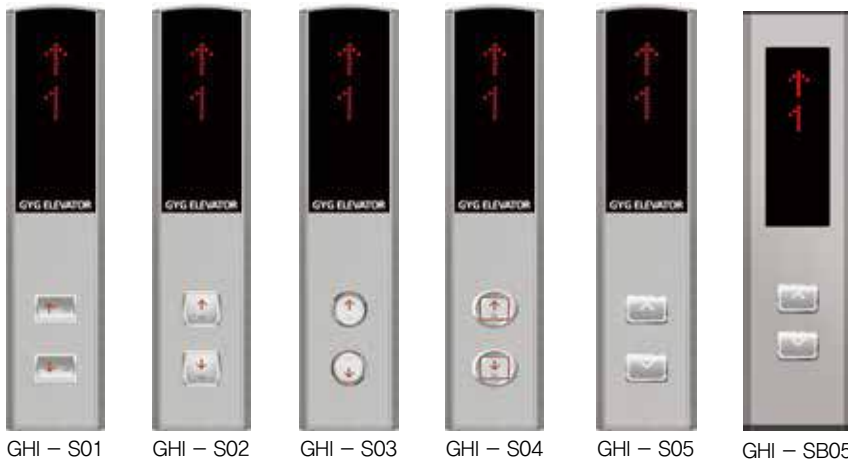
# Hall & Cabin Design

## HALL BUTTON / HALL INDICATOR BUTTON

### Flush mounted type

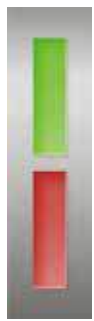


### Surface mounted type



# Hall & Cabin Design

## HALL LANTERN



GHL - 01



GHL - S01



GHL - 02



GHL - 03



GHL - S03

## HALL / CAR POSITION INDICATOR



GCP - 01 / GHP - 01



GCP - 02 / GHP - 02



GCP - 03 / GHP - 03



GCP - 04 / GHP - 04

## HAND RAIL



GHR - 01



GHR - 02



GHR - 03



GHR - 04

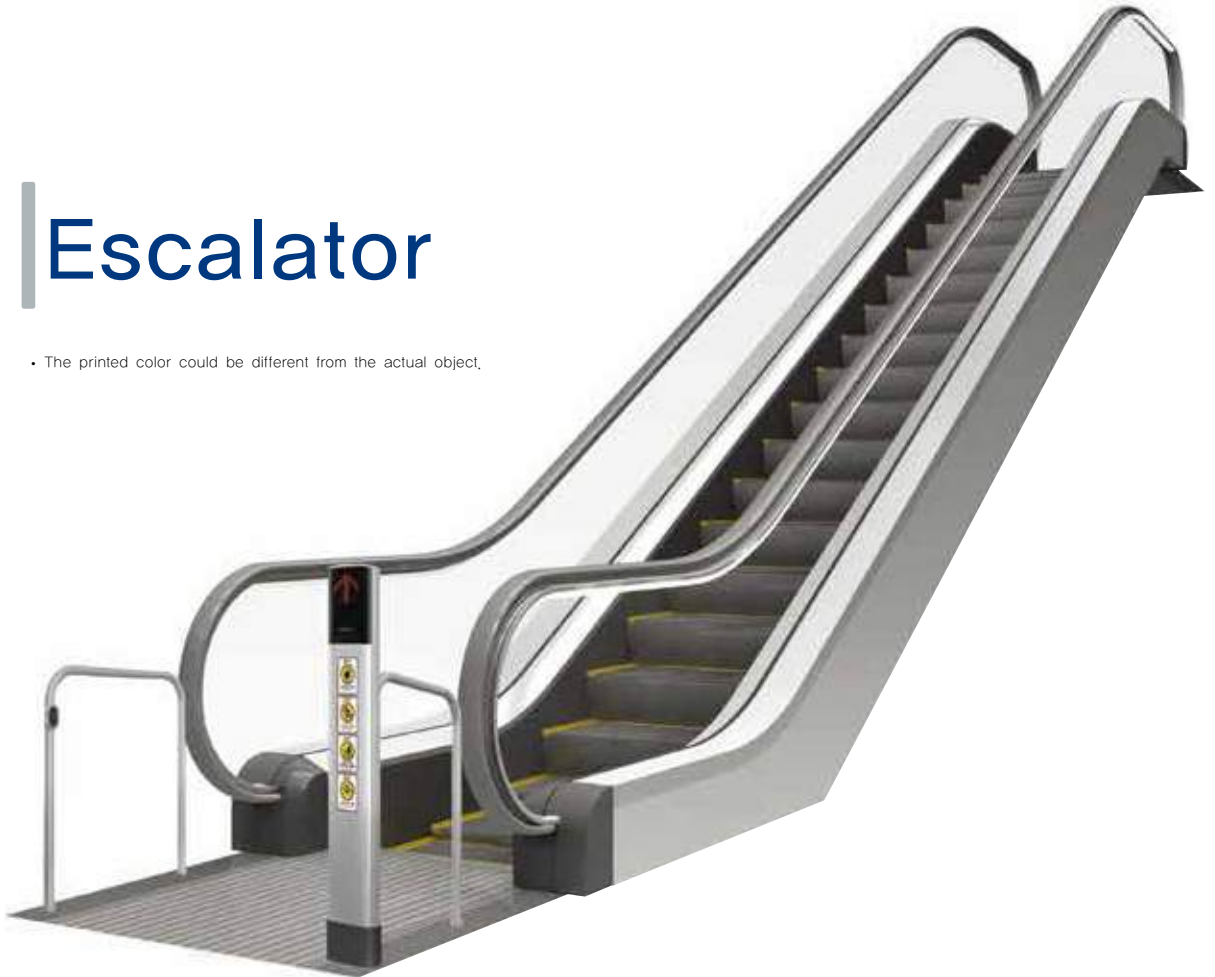


GHR - 05

# Escalator Design

## Escalator

• The printed color could be different from the actual object.



## Escalator Post Beam



GPB-E01

GPB-E02

GPB-E03

GPB-E04



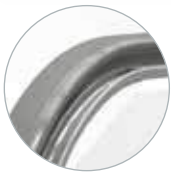
## Hand Rail (Gloss)



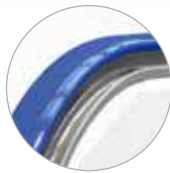
Ivory



Green



Gray



Blue



Red



Black



## Hand Rail (Matte)



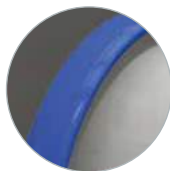
Ivory



Green



Gray



Blue



Red



Black



# GYG ELEVATOR

## GYG ELEVATOR HEAD OFFICE

3rd Fl., Joong Ang Bldg., Hakdong-ro 336, Gangnam-gu, Seoul, Korea  
Tel : (+82)-2-2056-1117 / (+82)-2-3442-1117 Fax : (+82)-2-540-5007

## GYG ELEVATOR FACTORY

50, 368beon-gil, Jangjisan-ro Gwantan-myeon, Paju-si, Gyeonggi-do, Korea  
Tel : (+82)-31-949-5111 Fax : (+82)-31-949-0113

## WEBSITES

<http://www.gygelevator.co.kr>  
<http://www.gygelevator.com>

## GYG ELEVATOR CUSTOMER SERVICE/ PRODUCT INQUIRY

:gumyoung@gyg.co.kr (Overseas Business Dept.)



KOTRA Seal of Excellence



The Excellent Company  
Brand of Seoul



Canada



China



Korea



Europe



KS A ISO 9001:2007 / ISO 9001:2000



GCOD DESIGN



Prize of Excellent Quality  
Competitiveness Enterprise